

# PRODUCT DATASHEET

## SPOT MULTI 2 x 30W 3000K FL WT/BK

SPOT MULTI 2x30W | Recessed mounted spotlight, swivelable with two spot



---

### Areas of application

- Accent- and general lighting for all kind of salesrooms
- Fashion shops, accessories shops
- Shops, boutiques
- Hotel rooms
- Cafés

---

### Product benefits

- Low flicker light thanks to special electronic control gear
- High luminous efficacy
- Covering against other ceiling installations thanks to closed sheet steel housing
- Easy replacement of external driver thanks to plug with bayonet lock
- Functional and minimalistic design
- 5 years guarantee

---

### Product features

- Large faceted reflector for high light output
- Beam angle: 38°
- Gimbal adjustment angle: +/- 25°



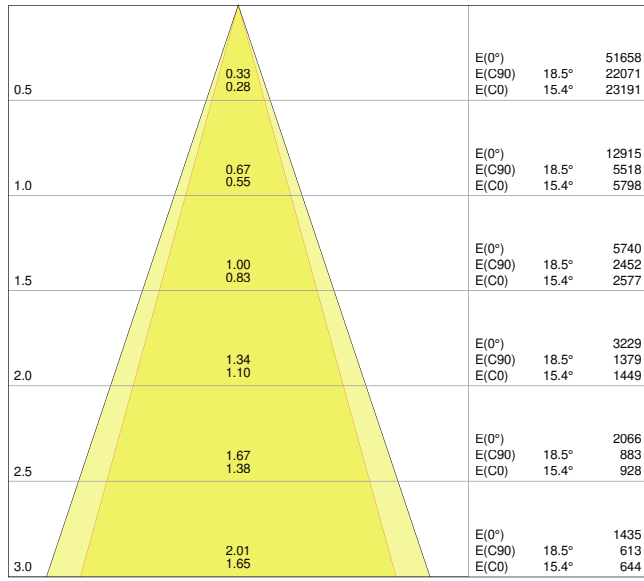
## TECHNICAL DATA

### Electrical data

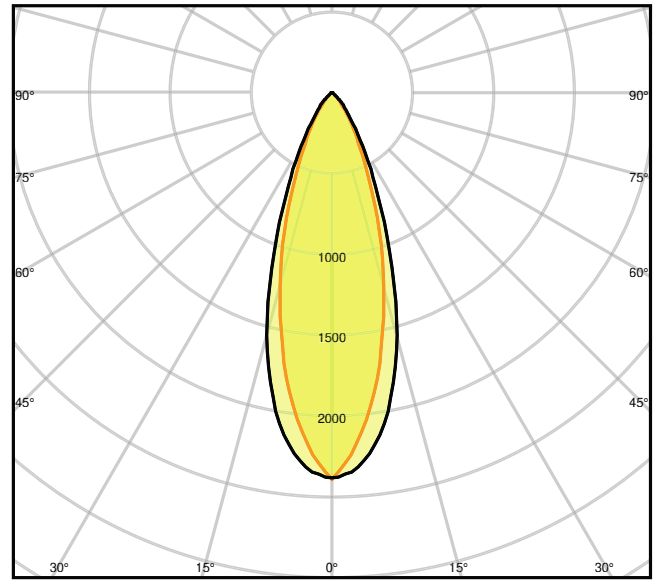
Nominal wattage	2*30 W
Nominal voltage	220...240 V
Mains frequency	50...60 Hz
Nominal current	270 mA
Inrush current	46 A
Inrush current time $T_{h50}$	< 3.4 $\mu$ s
Max. no. of lum. on circuit break. B16 A	16
Max. no. of lum. on circuit break. C10 A	13
Max. no. of lum. on circuit break. C16 A	20
Power factor $\lambda$	$\geq 0.90$
Total harmonic distortion	< 15 %
Protection class	II
Operating mode	External LED driver

### Photometrical data

Luminous flux	2*2700 lm
Luminous efficacy	90 lm/W
Color temperature	3000 K
Light color (designation)	Warm White
Color rendering index Ra	> 80
Standard deviation of color matching	$\leq 4$ sdc <sub>m</sub>
Luminous intensity	-
Low flicker	Yes
Flickering metric (Pst LM)	-
Stroboscope effect metric (SVM)	-
Photobiological safety group acc. to EN62778	RG1
Beam angle	38 °



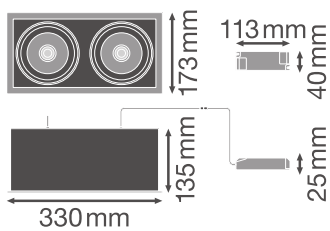
LDC typ cone



LDC typ polar

Dimensions & Weight

Length	330.00 mm
Width	173.00 mm
Height	135.00 mm
Product weight	2700.00 g



Materials & Colors

Product color	White
---------------	-------

Housing color	White
Body material	Aluminum
Cover material	Polymethylmethacrylate (PMMA)
Glow Wire Test according to IEC 60695-2-12	650 °C

### Application & Mounting

Ambient temperature range	-10...+40 °C
Type of connection	Screw terminal, 2-Pole (L,N)
Type of protection	IP20
Protection class IK (shock resistance)	IK03
Dimmable	No
Mounting type	Recessed
Mounting location	Ceiling
Application environment	Indoor
Mounting length	320 mm
Mounting width	160 mm
Mounting depth	250 mm
Adjustable	Yes
LED module replaceable	Not replaceable
With light source	Yes

### Lifespan

Lifespan L70/B50 at 25 °C	50000 h <sup>1)</sup>
Lifespan L80/B10 at 25 °C	45000 h <sup>1)</sup>
Lifespan L90/B10 at 25 °C	30000 h
Number of switching cycles	50000

<sup>1)</sup> t[h]: L70 / B50 @ 25 °C (Ta), t[h]: L80 / B10 @ 25 °C (Ta), t[h]: L90 / B10 @ 25 °C (Ta)

### Control gear

ECG - Length	113 mm
ECG - Width	40 mm
ECG - Height	25 mm

### Certificates & Standards

Standards	CE / CB / ENEC / TÜV SÜD / RoHS
Luminaire with limited surface temperature, "D sign"	No

Ball shot safe

No

## EQUIPMENT / ACCESSORIES

– Driver included

## DOWNLOAD DATA

## Documents and certificates



User instruction



Addon Technical Information



On-Pack-Info



Declarations Of Conformity CE



Declarations Of Conformity UKCA

## Photometric and lighting design files



IES file (IES)



LDT file (Eulumdat)



ULD file (DIALux)



ROLF file (RELUX)



UGR file (UGR table)



LDC typ cone



LDC typ polar

## Tender texts



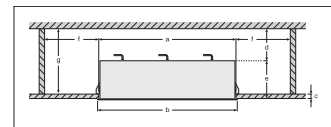
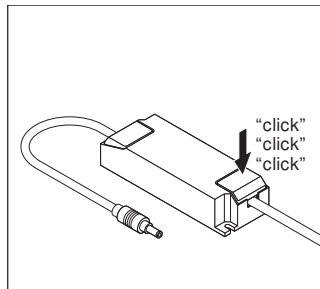
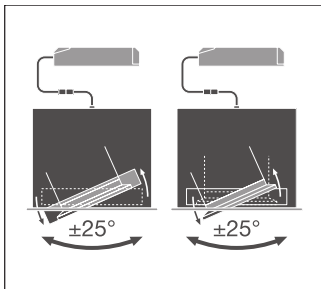
Tender documents

## LOGISTICAL DATA

Product code	Packaging unit (Pieces/Unit)	Dimensions (length x width x height)	Gross weight	Volume
4058075113961	Folding box 1	210 mm x 355 mm x 175 mm	2810.00 g	13.05 dm <sup>3</sup>
4058075113978	Shipping box 4	730 mm x 220 mm x 355 mm	11996.00 g	57.01 dm <sup>3</sup>

The mentioned product code describes the smallest quantity unit which can be ordered. One shipping unit can contain one or more single products. When placing an order, for the quantity please enter single or multiples of a shipping unit.

### ADDITIONAL CATALOG INFORMATION



### References / Links

- For Guarantee see [www.ledvance.com/guarantee](http://www.ledvance.com/guarantee)

### DISCLAIMER

Subject to change without notice. Errors and omission excepted. Always make sure to use the most recent release.