

PRODUCT DATASHEET

LN SF IP44 1200 P 32W 830 WT

LINEAR SURFACE IP44 | Robust IP44 luminaires with direct light emission and integrated driver for surface applications, up to 137 lm/W

Areas of application

- Efficient replacement for traditional T8 and T5 luminaires
- Public buildings
- General illumination
- Libraries, schools



Product benefits

- Low maintenance and low operational costs
- Protection against cover falling, theft and vandalism thanks to safety screws
- Cable entry on the back of the luminaire and on each end-caps for easy electrical connection
- Easy and quick installation
- Low flicker light thanks to special electronic control gear
- 5 years guarantee

Product features

- Surface mounted luminaires with direct light emission
- Type of protection: IP44
- Impact resistance: IK08
- Available in 3 different lengths: 600 mm, 1200 mm and 1500 mm
- High luminous efficacy: up to 137 lm/W
- Through-wiring cable already installed



- Lifetime (L80/B10): 70,000 h (at 25 °C)
- White painted steel housing (like RAL: 9003)
- Diffusor material: UV-stable polycarbonate
- End caps (made of polycarbonate) screwed to the housing

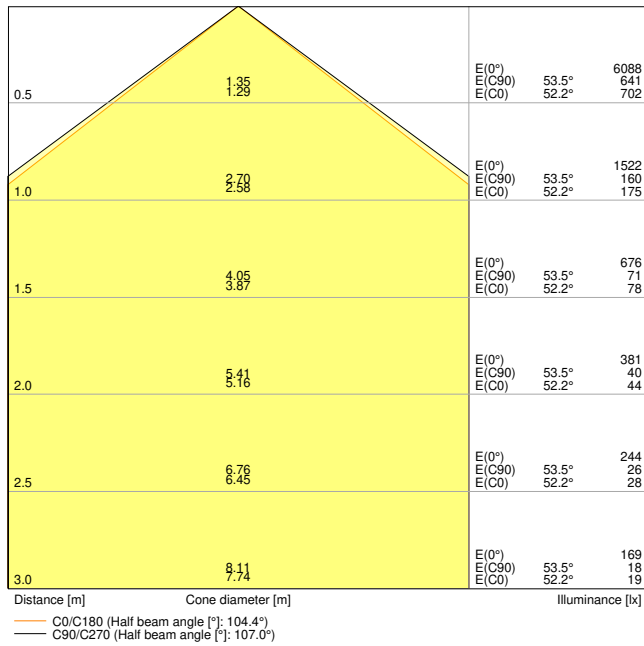
TECHNICAL DATA

Electrical data

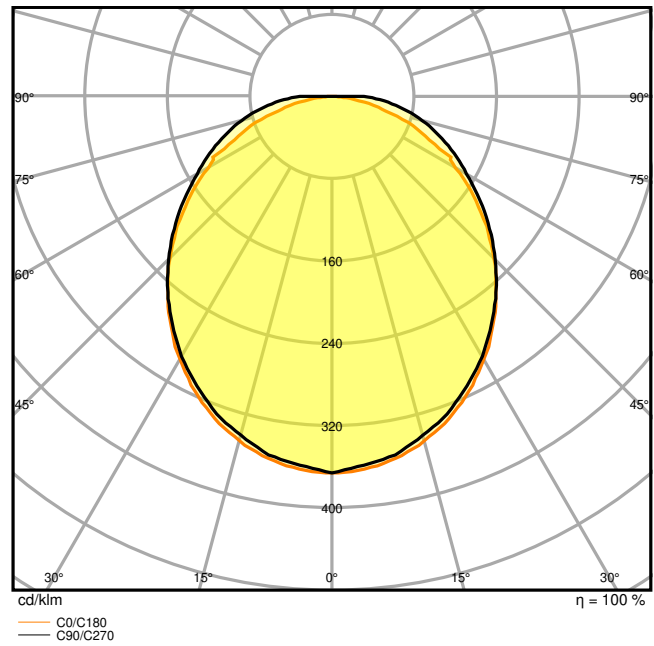
| | |
|--|-----------------------|
| Nominal wattage | 32.00 W |
| Nominal voltage | 220...240 V |
| Mains frequency | 50...60 Hz |
| Nominal current | 150.000 mA |
| Inrush current | 22 A |
| Inrush current time T_{h50} | 100 μ s |
| Max. no. of lum. on circuit break. B16 A | 33 |
| Max. no. of lum. on circuit break. C10 A | 20 |
| Max. no. of lum. on circuit break. C16 A | 33 |
| Power factor λ | > 0.90 |
| Total harmonic distortion | < 20 % |
| Protection class | I |
| Operating mode | Integrated LED driver |

Photometrical data

| | |
|--|----------------------|
| Luminous flux | 4160 lm |
| Luminous efficacy | 130 lm/W |
| Color temperature | 3000 K |
| Light color (designation) | Warm White |
| Color rendering index Ra | > 80 |
| Standard deviation of color matching | < 3 sdc _m |
| Low flicker | Yes |
| Flickering metric (Pst LM) | < 1 |
| Stroboscope effect metric (SVM) | < 0.4 |
| Photobiological safety group acc. to EN62778 | RG0 |
| Beam angle | 110 ° |



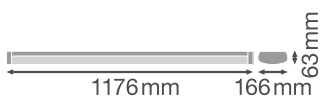
LDC typ cone



LDC typ polar

Dimensions & Weight

| | |
|----------------|------------|
| Length | 1176.00 mm |
| Width | 166.00 mm |
| Height | 63.00 mm |
| Product weight | 2400.00 g |



Materials & Colors

| | |
|--|--------------------|
| Product color | White |
| Housing color | White |
| Body material | Steel |
| Cover material | Polycarbonate (PC) |
| Light emitting surface material | Polycarbonate (PC) |
| Glow Wire Test according to IEC 60695-2-12 | 650 °C |
| Mercury content | 0.0 mg |

Application & Mounting

| | |
|--|----------------------------|
| Ambient temperature range | -20...+40 °C |
| Temperature range at storage | -40...+80 °C |
| Type of connection | Screwless terminal, 3-Pole |
| Type of protection | IP44 |
| Protection class IK (shock resistance) | IK08 |
| Dimmable | No |
| Mounting type | Surface |
| Mounting location | Wall / Ceiling |
| Application environment | Indoor |
| Adjustable | No |
| LED module replaceable | Not replaceable |
| With light source | Yes |

Lifespan

| | |
|----------------------------|-----------------------|
| Lifespan L70/B50 at 25 °C | 70000 h ¹⁾ |
| Lifespan L80/B10 at 25 °C | 70000 h ¹⁾ |
| Lifespan L90/B10 at 25 °C | 41000 h |
| Number of switching cycles | 100000 |

¹⁾ t[h]: L70 / B50 @ 25 °C (Ta), t[h]: L80 / B10 @ 25 °C (Ta), t[h]: L90 / B10 @ 25 °C (Ta)

Control gear

| | |
|-----------------------------|--------|
| Output current | 780 mA |
| ECG - Output ripple current | < 10 % |

Certificates & Standards

| | |
|--|---------------------------------------|
| Standards | CE / CB / ENEC / TÜV SÜD / UKCA / EAC |
| Luminaire with limited surface temperature, "D sign" | Yes |

Ball shot safe

No

EQUIPMENT / ACCESSORIES

- Equipped with through-wiring cables and connectors
- Tool-free cable strain reliefs included

DOWNLOAD DATA

Documents and certificates



User instruction



Addon Technical Information



Packaging insert



Certificates



Declarations Of Conformity UKCA

Photometric and lighting design files



IES file (IES)



LDT file (Eulumdat)



ULD file (DIALux)



ROLF file (RELUX)



UGR file (UGR table)



LDC typ cone



LDC typ polar

CAD/BIM files



BIM_Revit_3D



CAD_STEP_3D

Tender texts



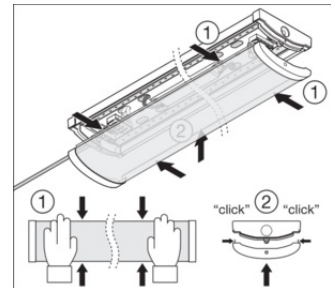
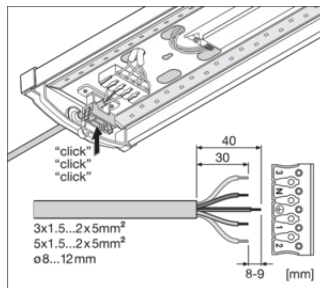
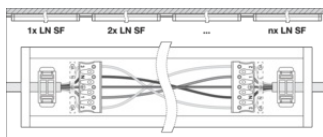
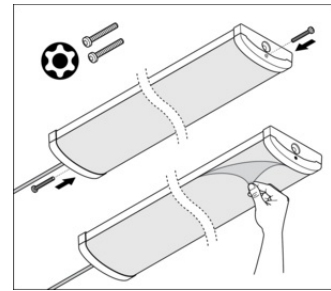
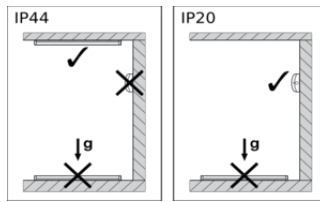
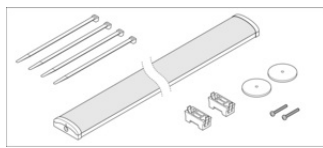
Tender documents

LOGISTICAL DATA

| Product code | Packaging unit (Pieces/Unit) | Dimensions (length x width x height) | Gross weight | Volume |
|---------------|------------------------------|--------------------------------------|--------------|-----------------------|
| 4058075733176 | Folding box 1 | 1,189 mm x 172 mm x 70 mm | 2955.00 g | 14.32 dm ³ |
| 4058075733183 | Shipping box 4 | 1,203 mm x 302 mm x 200 mm | 12820.00 g | 72.66 dm ³ |

The mentioned product code describes the smallest quantity unit which can be ordered. One shipping unit can contain one or more single products. When placing an order, for the quantity please enter single or multiples of a shipping unit.

ADDITIONAL CATALOG INFORMATION



References / Links

- For Guarantee see www.ledvance.com/guarantee

DISCLAIMER

Subject to change without notice. Errors and omission excepted. Always make sure to use the most recent release.